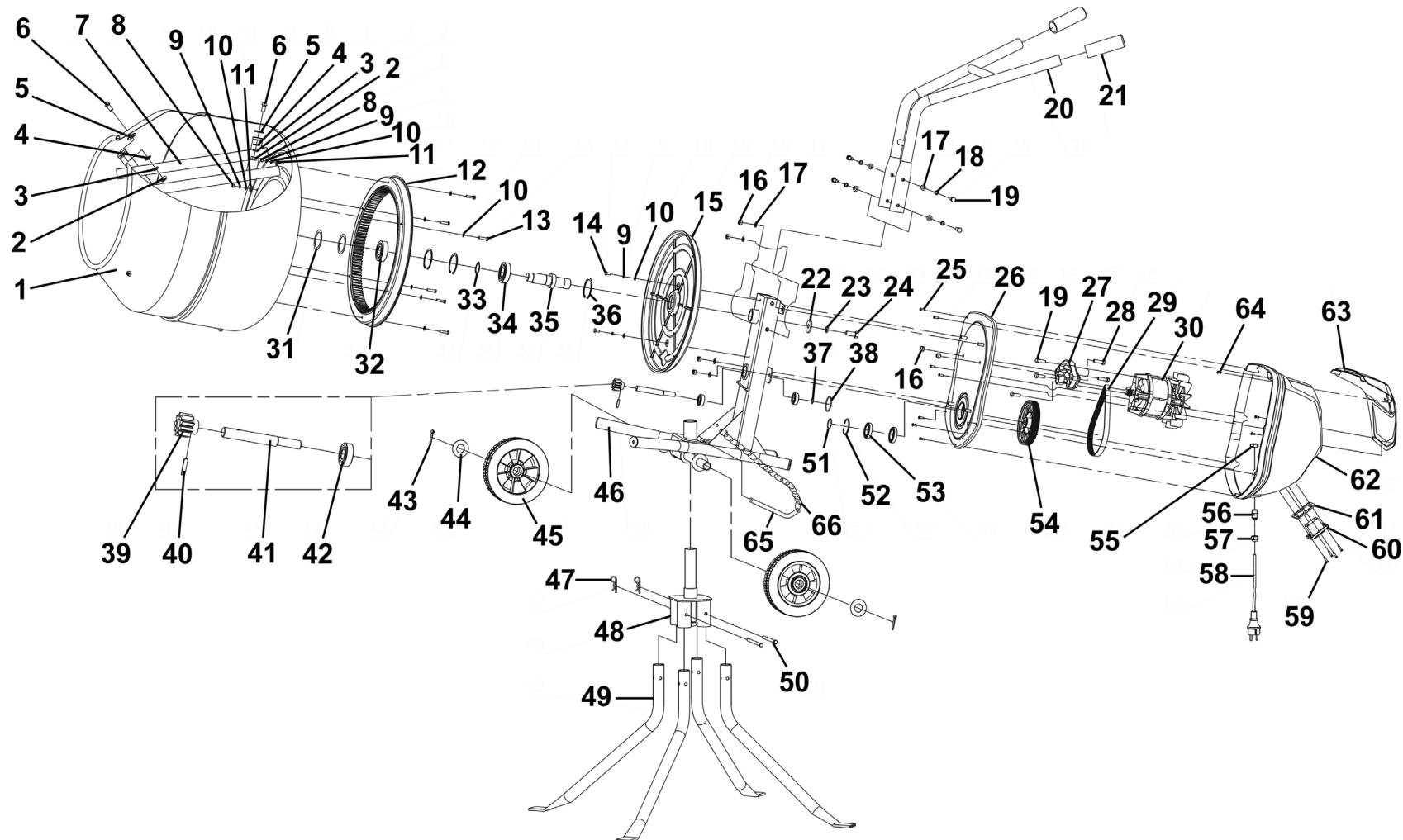




Parts Information:
550W Cement Mixer with Stand 135L
Model No: CMX135



NOTE: It is our policy to continually improve products and as such we reserve the right to alter data, specifications and component parts without prior notice.

There may be alternative versions of this product, please contact us should you require this information.

IMPORTANT: No liability is accepted for incorrect use of product. Spare parts must be fitted by a competent person

WARRANTY: Guarantee is 12 months from purchase date, proof of which will be required for any claim.

Sealey Group, Kempson Way, Suffolk Business Park, Bury St Edmunds, Suffolk. IP32 7AR



01284 757500



sales@sealey.co.uk



www.sealey.co.uk



Parts Information:
550W Cement Mixer with Stand 135L
Model No: CMX135

Item	Part No.	Description	Qty
1	CMX135-01	Drum 135L (for CMX135 only)	1
2	SN10.S	Steel Nut M10 Zinc	4
3	SWM10.S	Spring Washer M10 Zinc	4
4	FWM10.S	Flat Washer M10 Zinc	4
5	CMX135-05	Leather Washer Ø10	4
6	BHSS1025.S	Button Head Socket Screw M10 X 25 Zinc	4
7	CMX135-07	Mixing Blade (for CMX135 only)	2
8	SN6.S	Steel Nut M6 Zinc	6
9	SWM6.S	Spring Washer M6 Zinc	8
10	FWM6.S	Flat Washer M6 Zinc	14
11	CMX135-11	Leather Washer Ø6	6
12	CMX135-12	Cogwheel (Large)	1
13	SS625.S	Hex Head Set Screw M6 X 25 Zinc	6
14	SS620.S	Hex Head Set Screw M6 X 20 Zinc	2
15	CMX135-15	Plastic Rotator	1
16	NLN8.S	Nyloc Nut M8 Zinc	6
17	FWM8.S	Flat Washer M8 Zinc	8
18	SWM8.S	Spring Washer M8 Zinc	4
19	SS825.S	Hex Head Set Screw M8 X 25 Zinc	7
20	CMX135-20	Handle	1
21	CMX135-21	Handle Grip Ø32	2
22	FWM12.S	Flat Washer M12 Zinc	1
23	SWM12.S	Spring Washer M12 Zinc	1
24	SS1230.S	Hex Head Set Screw M12 X 30 Zinc	1
25	CMX135-25	Self-Tapping Screw ST4.2x16	7
26	CMX135-26	Motor End Plate	1
27	CMX135-27	Motor Seat	1
28	SS830.S	Hex Head Set Screw M8 X 30 Zinc	2
29	CMX135-29	Toothed Belt (6PJ-L540)	1
30	CMX135-30	Motor (for CMX135 only)	1
31	CMX135-31	Adjusting Washer	2
32	CMX135-32	Bearing 6305-2RS	1
33	CMX135-33	External Circlip Ø30	1

Item	Part No.	Description	Qty
34	CMX135-34	Bearing 6206-2RS	1
35	CMX135-35	Drum Rotating Shaft	1
36	CMX135-36	Internal Circlip Ø62	3
37	CMX135-37	External Circlip Ø15	1
38	CMX135-38	O-Ring (41.5 x 2.65)	1
39	CMX135-39	Drive Pinion	1
40	CMX135-40	Pin 6 x 25	1
41	CMX135-41	Drive Pinion Shaft	1
42	B/6202-2RS	Bearing 6202-2rs	2
43	CMX135-43	Split Pin Ø5 x 40	2
44	CMX135-44	Flat Washer	2
45	CMX135-45	Fixed Wheel (for CMX135 only)	2
46	CMX135-46	Frame (for CMX135 only)	1
47	CMX135-47	R-Clip Ø3	2
48	CMX135-48	Leg Connection Bracket	1
49	CMX135-49	Support Leg	4
50	CMX135-50	Latch Pin Ø10 x 126	2
51	CMX135-51	Wire Snap Ring for Shaft	1
52	CMX135-52	Internal Circlip	1
53	CMX135-53	Bearing 61906-2RS	2
54	CMX135-54	Pulley (Large)	1
55	CMX135-55	Strain Relief Nut	1
56	CMX135-56	Strain Relief Bolt	1
57	CMX135-57	Strain Relief Locknut	1
58	CMX135-58	Plug / Plug	1
59	CMX135-59	Self-Tapping Screw ST3.5x16	4
60	CMX135-60	Switch (On/Off)	1
61	CMX135-61	Switch Gasket (Rubber)	1
62	CMX135-62	Motor Cover	1
63	CMX135-63	Decorative Cover	1
64	CMX135-64	Self-Tapping Screw ST4.2x13	2
65	CMX135-65	Steel Ball Pin	1
66	CMX135-66	Pin Chain	11

NOTE: It is our policy to continually improve products and as such we reserve the right to alter data, specifications and component parts without prior notice. There may be alternative versions of this product, please contact us should you require this information.

IMPORTANT: No liability is accepted for incorrect use of product. Spare parts must be fitted by a competent person

WARRANTY: Guarantee is 12 months from purchase date, proof of which will be required for any claim.

Sealey Group, Kempson Way, Suffolk Business Park, Bury St Edmunds, Suffolk. IP32 7AR



01284 757500



sales@sealey.co.uk



www.sealey.co.uk